



Post to Park: The Transformation of the Presidio

Brent D. Glass
Director Emeritus
National Museum of American History
Smithsonian Institution

IAAPA Attractions Expo
November 18, 2013



P. de la Balsa

P. de S. Juan

S. Juan

Rio del Sacramento

P. de Reyes

Puerto de S. Francisco

M. de S. Juan

S. Juan

26

24

22

P. de S. Jose

Rio S. Antonio

S. Antonio

Rio S. Lorenzo

M. de S. Jose

S. Clara

P. de S. Jose

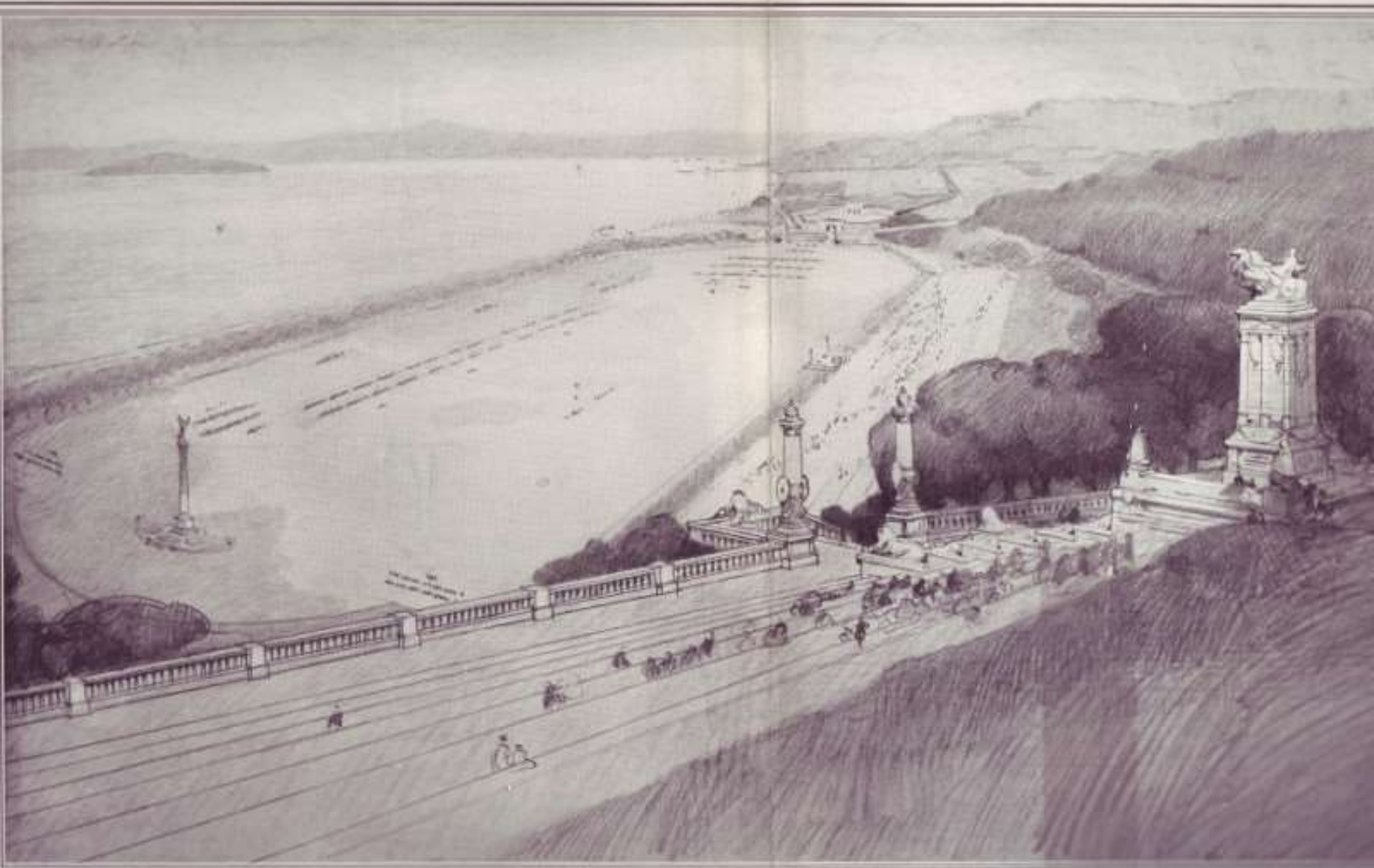






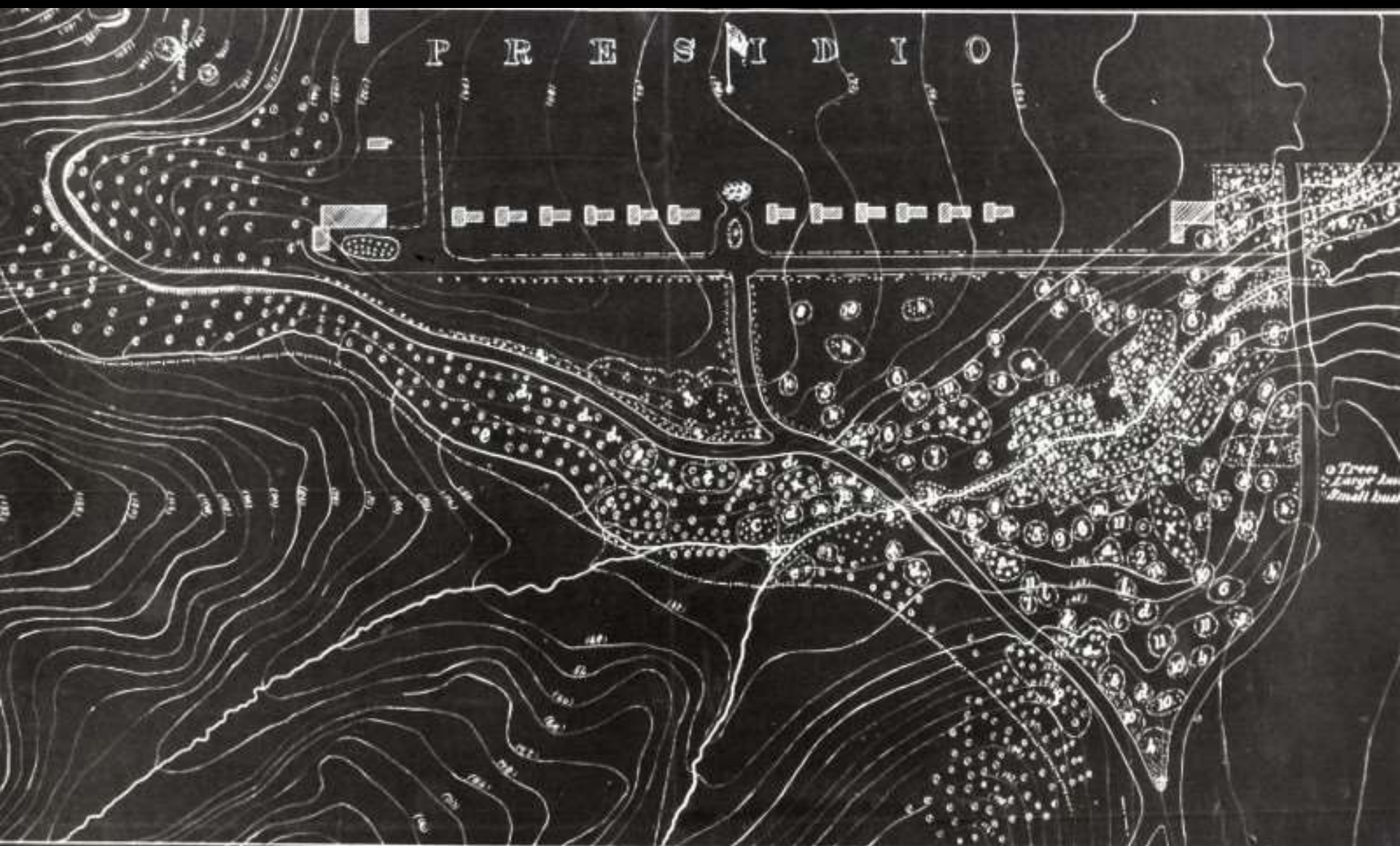






VIEW OF THE PROPOSED DRILL GROUND FROM THE HEIGHTS, LOOKING NORTHEAST













1745- Officers' Quarters, Presidio of San Francisco, California.









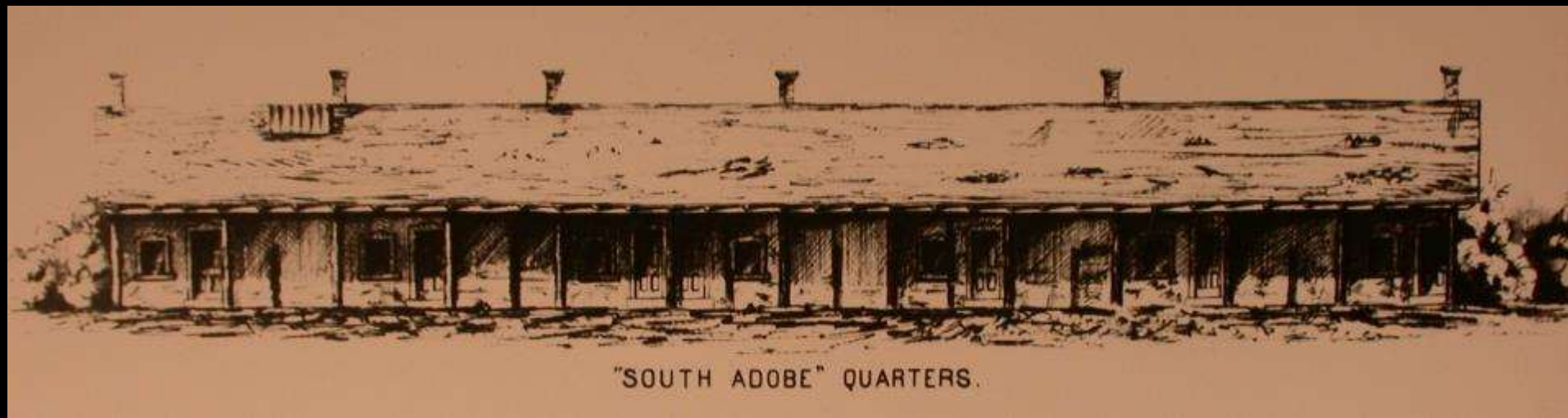












"SOUTH ADOBE" QUARTERS.

















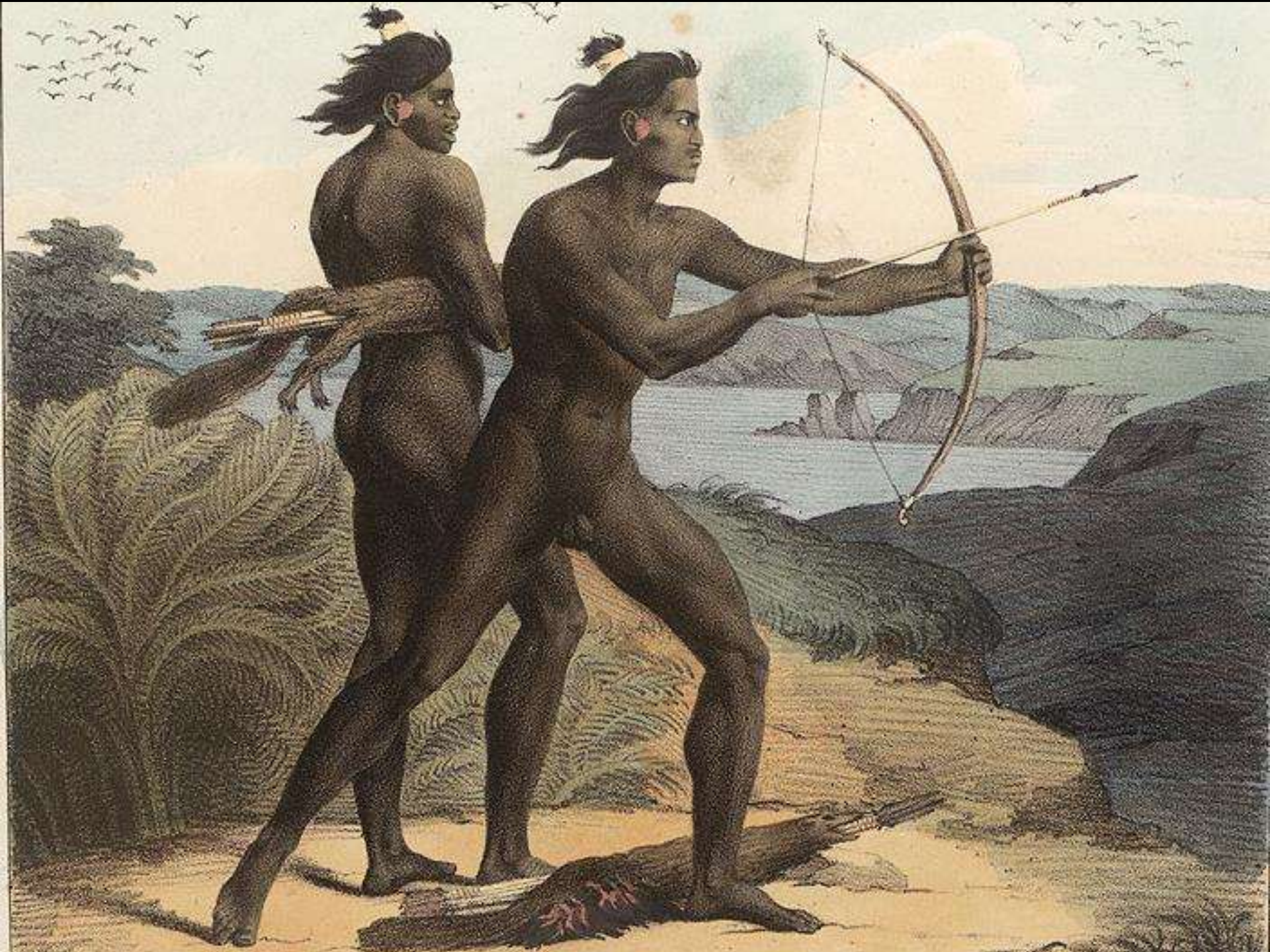






*Cooperative Research & Development between Pacific Gas & Electric Company and
the U.S. Geological Survey on Earthquake Hazards in the San Francisco Bay Area*





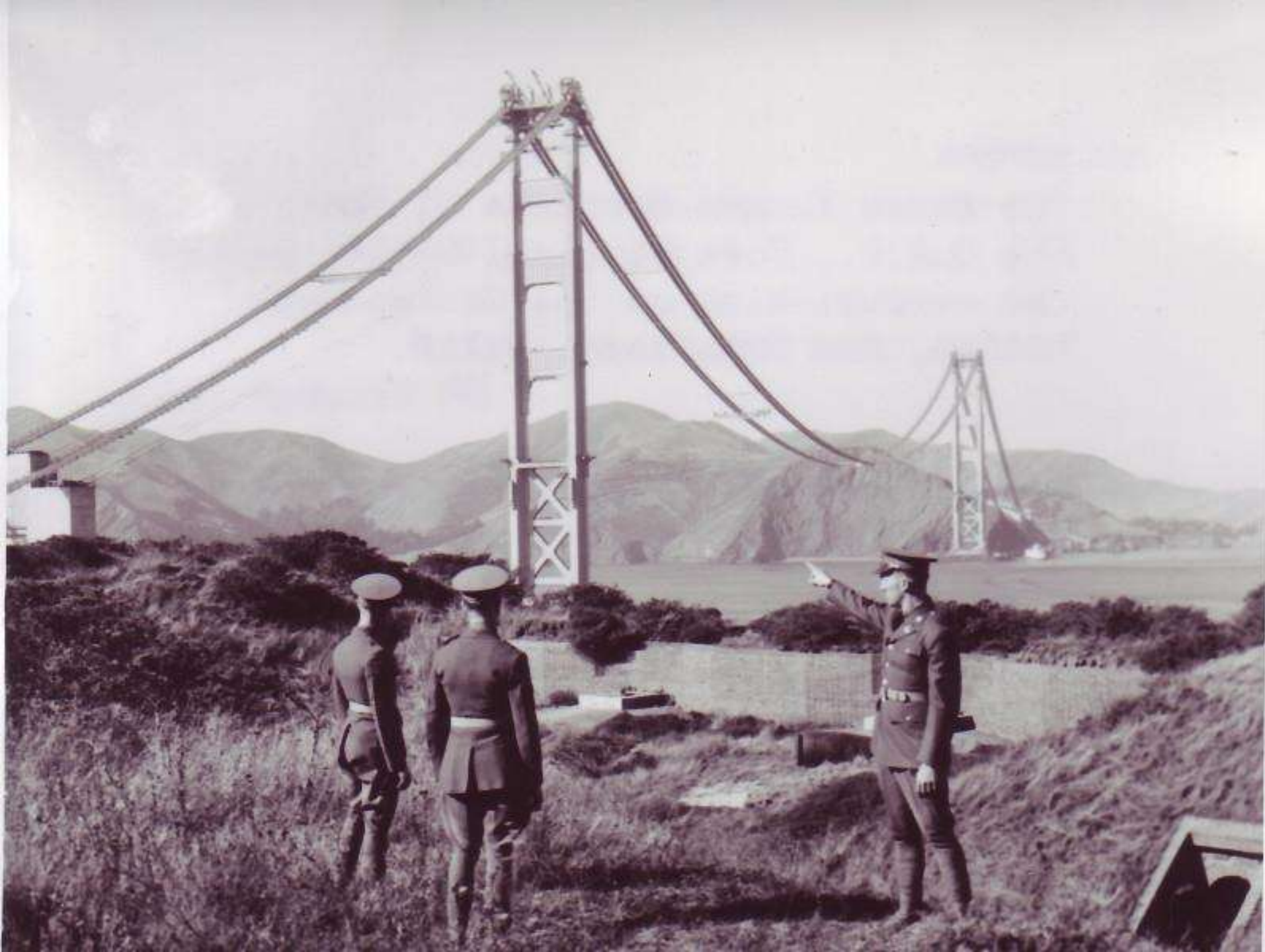


THE GREAT EARTHQUAKE AND FIRE, SAN FRANCISCO, CAL., 1906.
VIEW OF TWENTY THOUSAND REFUGEES ENCAMPED IN THE PRESIDIO.

*From
Grandma*









Lucas Cultural Arts Museum



steelblue

Presidio Exchange



The Bridge / Sustainability Institute



brentdglass@gmail.com