



---

---

---

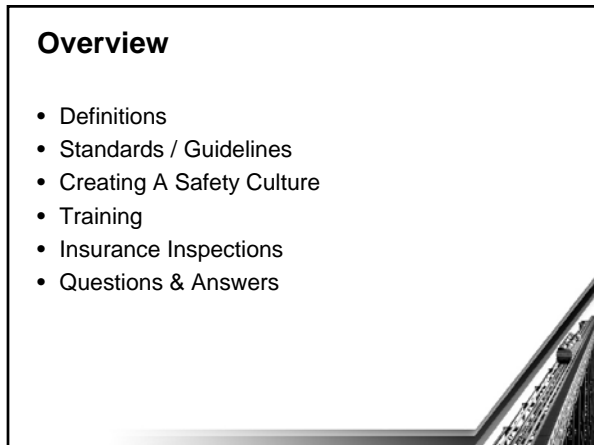
---

---

---

---

---



---

---

---

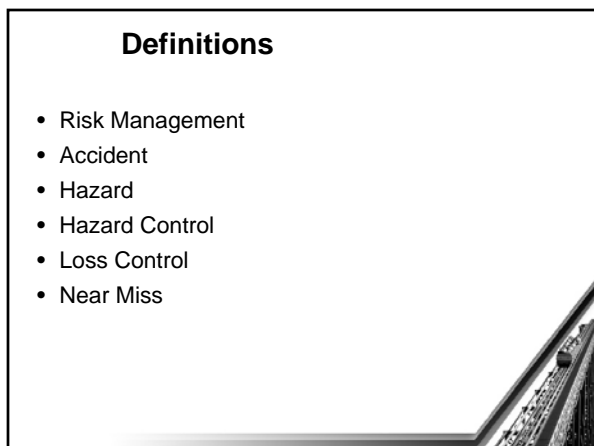
---

---

---

---

---



---

---

---

---

---

---


---

---

**Definitions**

- Risk Management
- Identify hazards associated with activities
- Take steps to reduce severity or occurrence
- Risk is inherent with most activities

– Example



---

---

---

---

---


---

---

---

**Definitions**

- Accident
  - An unplanned, undesired event, not necessarily injurious or damaging, that disrupts the completion of an activity



---

---

---

---

---


---

---

---

**Definitions**

- Hazard
  - A hazard is any pre-existing or potential condition in the workplace that, by itself or by interacting with other variables, can result in death, injuries, property damage and other losses.



---

---

---

---

---

---

---

---

### Definitions

- Hazard Control
  - Hazard control involves developing a program to recognize, evaluate and eliminate (or at least reduce) the destructive efforts of hazards arising from human errors and from conditions in the workplace.

---

---

---

---

---

---

---

---

### Definitions

- Loss control
  - Loss control is accident prevention, achieved through a complete safety and health control program. Loss control involves preventing employee injuries, occupational illnesses and accidental damage to the company's property. It also includes preventing injuries, illnesses and property damage that may involve employees and guests.

---

---

---

---

---

---

---

---

### Risk Management

- Near Miss
  - What is it?
  - Results in neither injury or property damage
    - Has the potential to inflict the above
    - 75% of industrial incidents are forecast by near misses

---

---

---

---

---


---

---

---

**Standards / Guidelines**

- What are they?
- Who creates them?
- Why are they needed?



---

---

---

---

---


---

---

---

**Standards / Guidelines**

- American Society Testing Materials (ASTM)
  - F 24
    - Standards cover operations, attraction maintenance, manufacturing, inspection and so much more.
- National Fire Protection Association (NFPA)
  - 101 – Life Safety Code
  - 96 – Hood / duct systems over cooking appliances
  - 13 – Sprinkler Systems
  - 10 – Fire Extinguishers
- National Electric Code



---

---

---

---

---


---

---

---

**Standards / Guidelines**

- Insurance / Industry
  - More later
- Common sense!



---

---

---

---

---


---

---

---

### Hidden costs of accidents

- It's not just the Medical cost and compensation
- Iceberg example



---

---

---

---

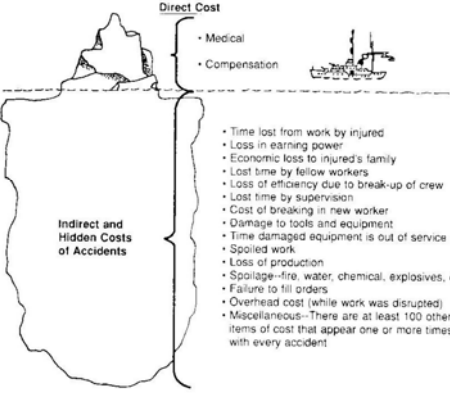
---

---

---

---

### THE HIDDEN COSTS OF ACCIDENTS

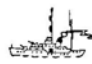


**Direct Cost**

- Medical
- Compensation

**Indirect and Hidden Costs of Accidents**

- Time lost from work by injured
- Loss in earning power
- Economic loss to injured's family
- Lost time by fellow workers
- Loss of efficiency due to break-up of crew
- Lost time by supervision
- Cost of breaking in new worker
- Damage to tools and equipment
- Time damaged equipment is out of service
- Spoiled work
- Loss of production
- Spoilage—fire, water, chemical, explosives, etc
- Failure to fill orders
- Overhead cost (while work was disrupted)
- Miscellaneous—There are at least 100 other items of cost that appear one or more times with every accident



---

---

---

---

---

---

---


---

### Costs of Accidents

- Every \$1 or direct accident costs =
- \$3 in in-direct costs
  - Could equal indirect costs being 4 to 10 times the insured costs.

*It's costs that we cannot live with.*

\*Professional safety, Robert Sheriff



---

---

---

---

---

---

---

---

### Old Approach to Safety

- 1931 H.W. Heinrich Study
  - Showed that
    - 1 accident with serious injury
    - 29 in minor injuries
    - 300 producing no injuries
  - If you only react to major injuries, you are missing 99.7% of accidents!
  - Same factors causing near misses can cause a major injury next time

---

---

---

---

---

---

---

---

### Old Approach to Safety

- Reaction... not Prevention
- Only series accidents were counted

---

---

---

---

---

---

---

---

### Safety Culture

- How can I create one?
  - Starts at the top
  - Policies
  - Procedures

---

---

---

---

---


---

---

---

**Training**

- What else can I do?
  - Mini safety training calendar
  - Safety Tips on bulleting board
  - Mock incidents
  - And more



---

---

---

---

---


---

---

---

**FACILITY INSPECTIONS**

How facility inspections help your business



---

---

---

---

---


---

---

---

**FACILITY INSPECTIONS**

- Facility inspections provide feedback to the FEC operator as to the overall condition of the FEC.
- Facility inspections are necessary to be able to provide the safest possible environment for the FEC visitors to have fun in and your employees to work in.



---

---

---

---

---

---

---

---

**FACILITY INSPECTIONS**

- Without facility inspections problems would go unnoticed and dramatically increase the risk and liability of operating the FEC.
- Facility inspections instill a confidence in the employees that they are working in safest FEC possible and can project that confidence to the FEC visitors.

---

---

---

---

---

---

---

---

**FACILITY INSPECTIONS**

- A safe FEC is a profitable FEC (Economic conditions notwithstanding).
- With today's tough economic landscape what FEC operator wants to pay out for needless corrective repairs or damages?
- Word of mouth is a powerful marketing tool. Your safety record will promote your FEC as a safe and fun place to be.

---

---

---

---

---

---

---

---

**FACILITY INSPECTIONS**

- How often should your facility be inspected?
- Everyday!
- Every week!
- Every month!

---

---

---

---

---

---

---

---



### FACILITY INSPECTIONS

- You should have in-house policies and procedures in place for facility inspection.
- Anyone performing the facility inspection should be familiar with the entire FEC and know how to spot a problem.
- The three most important aspects regarding any inspection is: Documentation, Documentation and Documentation!

---

---

---

---

---

---

---

---

### FACILITY INSPECTIONS

Inspection Areas:

- Fire Extinguishers  Sprinkler System  Smoke Detectors
- Emergency Exits & Doors  Emergency Exit Signs
- Emergency Lights  Corridors & Walkways
- Slip, Trip & Fall Hazards  Laceration Hazards
- Compressed Gas Cylinders Secured  Fencing & Barriers
- Housekeeping  Safety & Instructional Signs  First Aid Kit
- MSDS  Electrical  Employee Training  Rides/Attractions
- Merchandise/Redemption Area  Games/Arcade Area
- Food Operation  Restrooms  Storage Areas
- Maintenance Shop  Parking  Parking Egress
- Evacuation & Fire Plans Posted

---

---

---

---

---

---

---

---

### SAFER FACILITIES

What a safer facility means to your insurance company

- Better risk, easier to insure.
- Lower risk means lower premiums.

---

---

---

---

---

---

---

---

**SAFER FACILITIES**

- Companies that use proactive risk management programs and strategies mitigate the risk of losses. As you decrease the risk of losses, the results can be lower premiums, increased safety, productivity and profitability.

---

---

---

---

---

---

---

---

**SAFER FACILITIES**

Some items to be sure you have:

- Safety Procedures (Fire, Evacuation, etc.)
- Manuals (Inspection, Training, etc.)
- Daily Inspections – In House
- Crisis Management Procedures
- Periodic Inspections – Local, State, Insurance
- Risk Evaluation Assessment – Insurance
- Documentation

---

---

---

---

---

---

---

---

# General Facility

Period Ending: \_\_\_\_\_

Date				
------	--	--	--	--

## Alarm System

Manual stations accessible				
System test expiration date				

## Chemical and Equipment Storage

Guest access to chemical/equipment areas				
Chemical warning decals				
No Smoking Permitted				
Containers Labeled				
MSDS Sheets				

## Kitchen Fire Protection

Hood & Duct cleanliness				
Outside cleaning documentation due date				
Automatic extinguishing protection is charged and operational				
Automatic extinguishing system nozzles has protective covers				
Automatic extinguishing system fusible link clean				
Fire extinguisher accessible / charged / inspection date				

## Decorations

New decorations noncombustible materials				
Installed properly				

## Electrical

Exposed electrical wires				
Extension cords / multi strips				
Electrical breakers held closed				
Storage by Electrical breaker panel				

## Exits

Doors open easily				
Unobstructed				
Doors marked "No Exit"				
Unlocked during business hours				
No storage behind exits				

## Exit Lighting/Emergency Lighting

Test all units				
Exit signs lights on				

## Fire Doors

Doors not wedged open				
-----------------------	--	--	--	--

## Fire Protection Equipment

Condition / inspected / charged fire extinguishers				
Staff training				
Sprinkler system Inspection tag				
Sprinkler heads obstructed				
Condition of standpipe hose cabinet?				
Fire department sprinkler connection				
Spare sprinkler heads				

## First Aid

Kit stocked				
-------------	--	--	--	--

### Foot Traffic

Traffic areas clear				
Tripping hazards				
Steps, stairs and walkways condition ok				

### Heat & Air Conditioning

Heat & air conditioning system service date				
---	--	--	--	--

### Lighting

Lights secured				
Lights covered				

### Occupant Load

Sign Posted				
-------------	--	--	--	--

### Parking Lot

General condition				
-------------------	--	--	--	--

### Restrooms

Floor free of water / litter				
Water temperature checked				

SAMPLE

# Mini Golf

## Daily

1. BLOW OFF ALL GREENS AND SIDEWALKS
2. BLOW OUT ALL PIPES THROUGH PROPS
3. BLOW OUT PIPE ON NINTH HOLE.
4. INSPECT COURSE FOR ANY OBVIOUS HAZARDS.
5. INSPECT GOLF CLUBS FOR LOOSE, BROKEN PARTS
6. TEST WATER - ADD CHEMICALS AS NEEDED.
7. USE SKIMMER TO CLEAN WATER
8. TURN ON PUMP AND FILTER SYSTEM

## Weekly

1. CHECK PROPS FOR SECURENESS
2. CHECK HOLES FOR LOOSE BRICKS
3. CLEAN DRAIN GRATE OF DEBRIS
4. EMPTY FILTER ON FILTER SYSTEM IN PUMP HOUSE
5. VACUUM WATER

## Monthly

1. GREASE PUMP MOTOR ZERKS

---

Deficiencies

---

Corrections made

---

Other

---

Inspected by: \_\_\_\_\_ Date: \_\_\_\_\_