

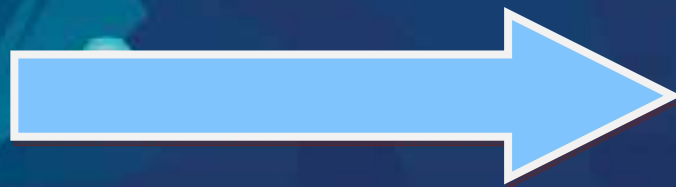
THE INTERNATIONAL ASSOCIATION OF AMUSEMENT PARKS & ATTRACTIONS • JULY 2011 • \$8.00 US

# FUNWORLD

## HOW 'AVATAR' CHANGED THE ATTRACTIONS INDUSTRY

ALSO IN THIS ISSUE...

- Attraction Apps
- ADA: What You Need to Know
- Top 10 FEC Danger Zones



FUNWORLD MAGAZINE

JULY 2011 ISSUE

[www.pageturnpro.com/FUNWORLD/28073-Funworld-July-2011/index.html#/1](http://www.pageturnpro.com/FUNWORLD/28073-Funworld-July-2011/index.html#/1)

THE INTERNATIONAL ASSOCIATION OF AMUSEMENT PARKS & ATTRACTIONS • SEPTEMBER 2011 • \$8.00 US

# FUNWORLD

## Hi, My Name's WALIBI Have We Met?



MUSEUM  
EXHIBITS  
THAT PUSH  
BOUNDARIES

IS A  
REDEMPTION  
STORE RIGHT  
FOR YOUR FEC?

5 TIPS FOR  
SUCCESSFUL  
ONLINE SALES

**EXCLUSIVE!**  
EXCERPT FROM  
MARTY SKLAR'S  
NEW BOOK

ADA  
ATTRICTIONS  
PERSPECTIVE

FUNWORLD MAGAZINE

SEPTEMBER 2011 ISSUE

[www.pageturnpro.com/FUNWORLD/29966-Funworld-September-2011/index.html#/1](http://www.pageturnpro.com/FUNWORLD/29966-Funworld-September-2011/index.html#/1)

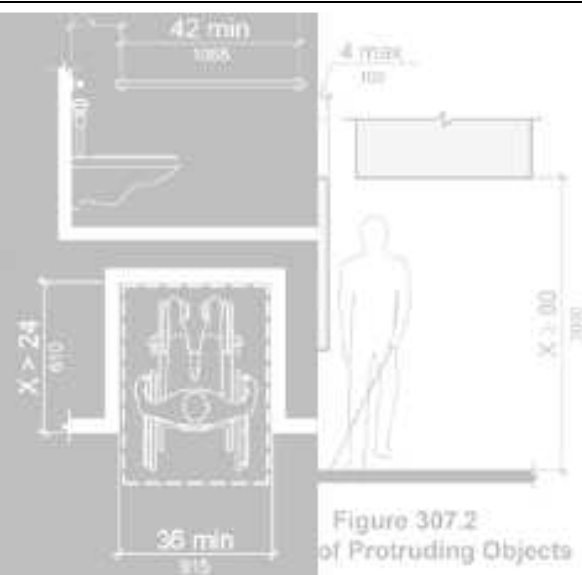


Figure 307.2  
of Protruding Objects

## 2010 ADA Standards for Accessible Design

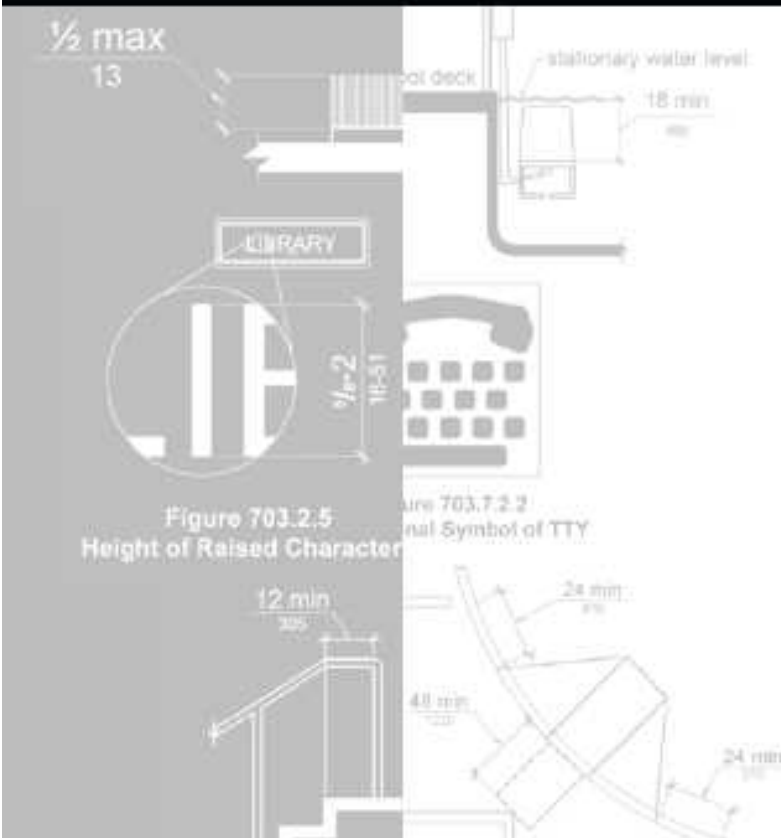


Figure 703.2.5  
Height of Raised Character

Department of Justice  
September 15, 2010

2010 ADA STANDARD FOR ACCESSIBLE DESIGN

[www.ada.gov](http://www.ada.gov)

# 2010 ADA STANDARD for Accessible Design

- **EFFECTIVE MARCH 15, 2012** for “receipt” of building permits and or start of new construction on buildings or facilities that do not require a permit
- **REMOVAL OF EXISTING ARCHITECTURAL BARRIERS** required on all facilities existing prior to March 15, 2012 (“*Readily Achievable ...without much effort of expense*”)
  - Up to March 15, 2012 can design to 1991 ADAAG Standard
  - On or after March 15, 2012 shall design to 2012 ADA Standard
  - For small businesses, \$15,000 per year tax credit and \$5000 tax deduction still usable for barrier removal efforts - <http://www.ada.gov/archive/taxpack.pdf>
- **“SAFE HARBOR”** for those buildings, facilities and sites that were designed and built in compliance to the 1991 ADAAG Standard.
- **CODES: ARCHITECTURAL ELEMENTS** integrated into USA’s International Building Code and ICC ANSI A117.1 Accessible Buildings and Facilities Standard (*IBC does not include amusement rides, play grounds, water park leisure pools, golf or miniature golf.*)
- **48” REACH RANGE** – reach ranges to self-serve, vending and other equipment’s operable parts
- **FOREIGN MANUFACTURED PRODUCTS & EQUIPMENT** installed & operated in USA

**2010 STANDARD APPLIES TO:** Permanent and Temporary facilities, events or programs

- |  |   |
|--|---|
| <ul style="list-style-type: none"> <li>Policies &amp; procedures</li> <li>Eligibility criteria, &amp; safety rules</li> <li>Service animal dogs</li> <li>Auxiliary aids &amp; services for communication</li> <li>WEB sites &amp; ticket sales</li> <li>Parking lots &amp; passenger loading drop offs</li> <li>Pedestrian circulation &amp; routes</li> <li>Ticket and information windows &amp; counters</li> <li>Ticket, attraction and security gates/ barriers</li> <li>Door and gate clearances &amp; hardware</li> <li>Toilet rooms, and drinking fountains</li> <li>Retail transaction aisles &amp; counters</li> <li>ATMs, transaction, ticket &amp; vending machines</li> <li>Food order &amp; service windows &amp; queue lines</li> <li>Restaurant seating, counters &amp; bars</li> <li>Self service food line equipment &amp; condiments</li> <li>Theater and assembly W.C. viewing areas</li> <li>Stages, bleachers, viewing platform access</li> <li>Meet &amp; Greets, haunts, mazes</li> <li>Informational &amp; directional signage</li> <li>Picnic areas &amp; shelters</li> <li>Furniture &amp; equipment (some now others soon)</li> <li>Transportation, &amp; shuttles</li> </ul> | <ul style="list-style-type: none"> <li>Amusement ride gates, entries &amp; queue lines</li> <li>Amusement ride load &amp; unload platforms</li> <li>Amusement rides <u>with</u> seats</li> <li>Amusement rides <u>not</u> having user controls</li> <li>Amusement ride <u>for</u> family or adult use</li> <li>Children’s use play equipment</li> <li>Amusement attraction components</li> <li>Miniature golf &amp; regular golf courses</li> <li>Swimming pools, wave pools</li> <li>Leisure rivers, wading pools &amp; wet decks</li> <li>Wet play equipment &amp; attractions</li> <li>Spas, saunas &amp; hot tubs</li> <li>Arcade circulation areas</li> <li>Boating &amp; fishing docks</li> <li>Recreational boat slips</li> <li>Sports facility spectator &amp; players areas</li> <li>Sports courts and shooting ranges</li> <li>Exercise equipment circulation areas</li> <li>Hotels, motels &amp; cabins</li> <li>Camp and RV sites (portions now – others soon)</li> <li>Waterslides, portable and temporary amusement rides are not “covered” but should be on an accessible route, accessible signage</li> </ul> |
|--|---|